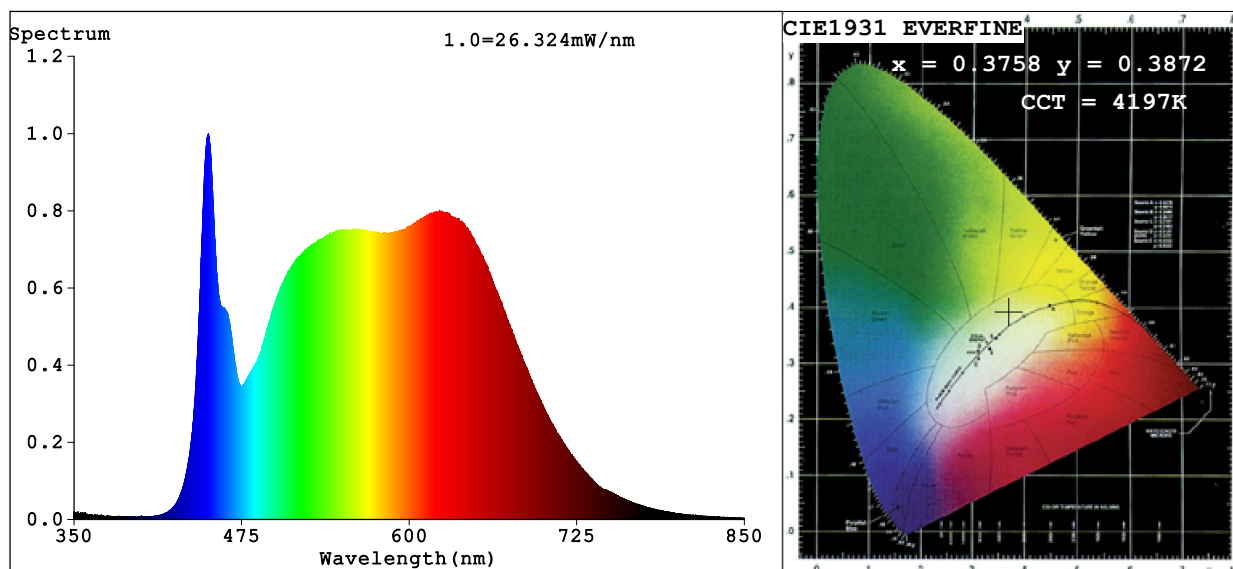


Spectrum Test Report



Color Parameters:

Chromaticity Coordinate: $x=0.3758$ $y=0.3872$ $u'=0.2180$ $v'=0.5054$

CCT=4197K (Duv=0.0062) Dominant WL:Ld =575.1nm Purity=29.0%

Ratio:R=18.8% G=76.8% B=4.3%; Peak WL:Lp=450.2nm FWHM=23.5nm

Render Index:Ra=93.8 CRI=90.5 TM30:Rf=92 Rg=98

R1 =94 R2 =95 R3 =95 R4 =94 R5 =92 R6 =92 R7 =98

R8 =91 R9 =75 R10=87 R11=94 R12=69 R13=94 R14=97 R15=91

Photo Parameters:

Flux = 1373 lm Eff. : 67.42 lm/W Fe = 4.750 W

Electrical parameters:

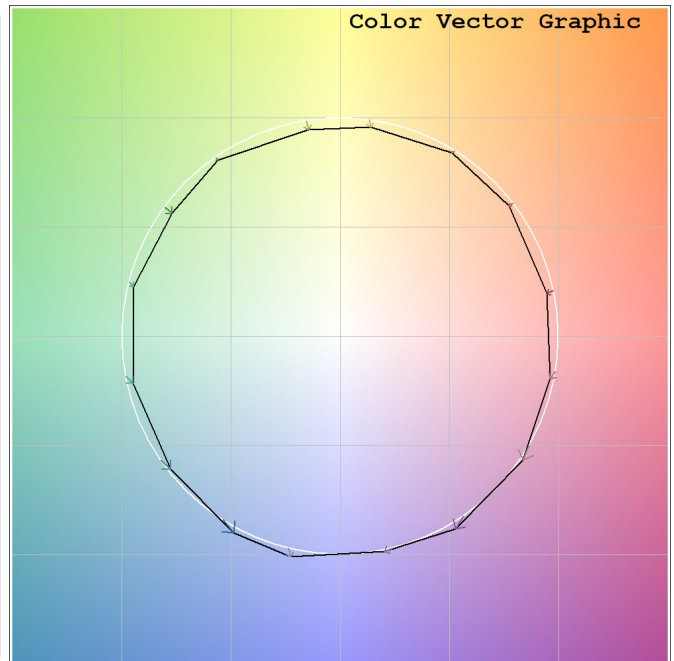
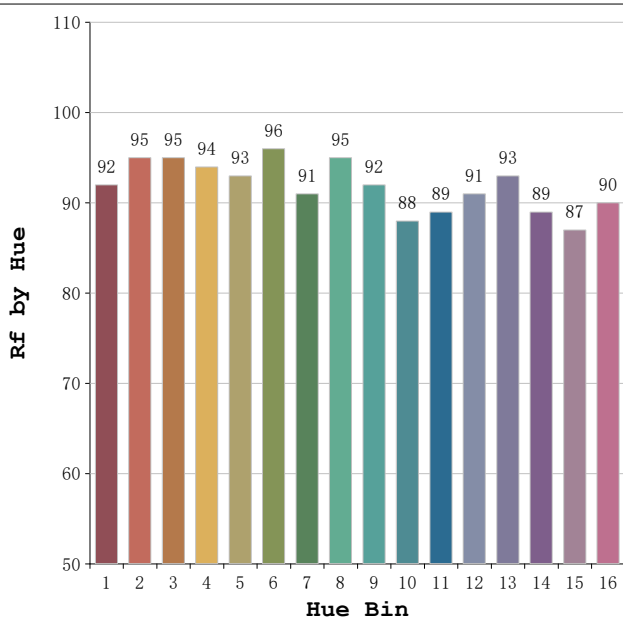
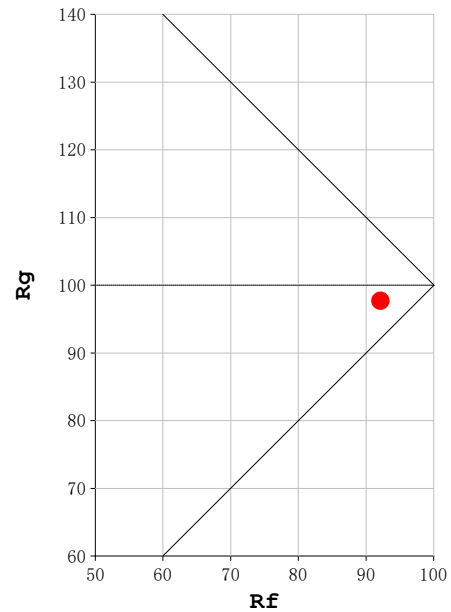
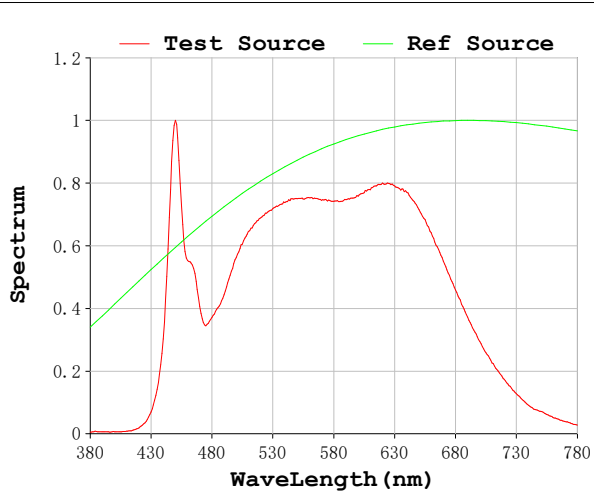
V = 23.998 V I = 0.8486 A P = 20.36 W PF = 1.000

Status: Integral T = 1213 ms Ip = 48937 (75%)

Model:Ecoled Neón 360 Memory
Tester:Sergio Carneros
Temperature:27Deg
Manufacturer:Guoying - Estar

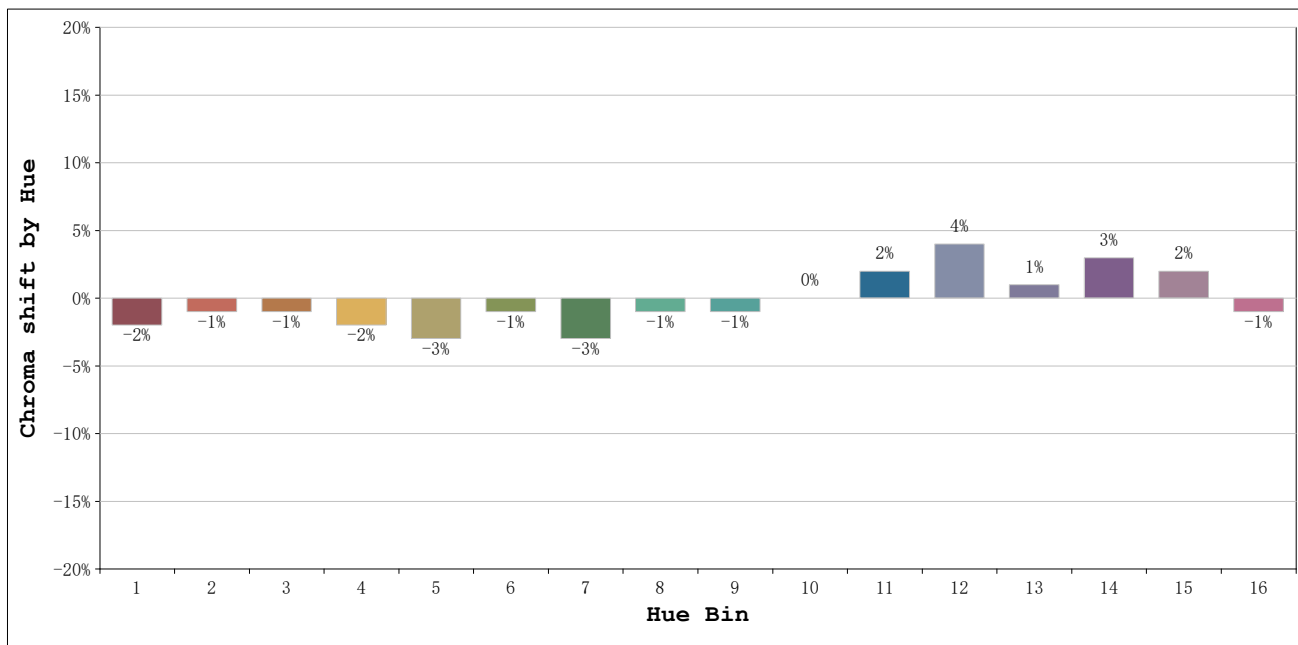
Number: 10.339
Date:2025-12-11 08:04:57
Humidity:35%
Remarks:100cm de neón

Rf: 92 **CCT: 4197 K** **u': 0.2180**
Rg: 98 **Duv: 0.0062** **v': 0.5054**



Model:Ecoled Neón 360 Memory
 Tester:Sergio Carneros
 Temperature:27Deg
 Manufacturer:Guoying - Estar

Number: 10.339
 Date:2025-12-11 08:04:57
 Humidity:35%
 Remarks:100cm de neón



			Graphic shift(%)	
Hue Bin	Hue Angle	Rf	Chroma	Hue
1	0.0° - 22.5°	92	-2	0
2	22.5° - 45.0°	95	-1	0
3	45.0° - 67.5°	95	-1	1
4	67.5° - 90.0°	94	-2	0
5	90.0° - 112.5°	93	-3	0
6	112.5° - 135.0°	96	-1	0
7	135.0° - 157.5°	91	-3	0
8	157.5° - 180.0°	95	-1	2
9	180.0° - 202.5°	92	-1	4
10	202.5° - 225.0°	88	0	6
11	225.0° - 247.5°	89	2	7
12	247.5° - 270.0°	91	4	2
13	270.0° - 292.5°	93	1	-3
14	292.5° - 315.0°	89	3	-5
15	315.0° - 337.5°	87	2	-6
16	337.5° - 360.0°	90	-1	-3

Model:Ecoled Neón 360 Memory
 Tester:Sergio Carneros
 Temperature:27Deg
 Manufacturer:Guoying - Estar

Number: 10.339
 Date:2025-12-11 08:04:57
 Humidity:35%
 Remarks:100cm de neón